

CATALOGUE
No. 24
OF
THEATRICAL
STAGE
RIGGING

U. S. DISTRICT COURT
EASTERN DISTRICT-PENNSYLVANIA
A. J. VALLER AND VALLER, Inc. { EQUITY
VS { 9763
AUTOMATIC DEVICES CO. {
EXHIBIT 2
..... Sheets. Sheet No.

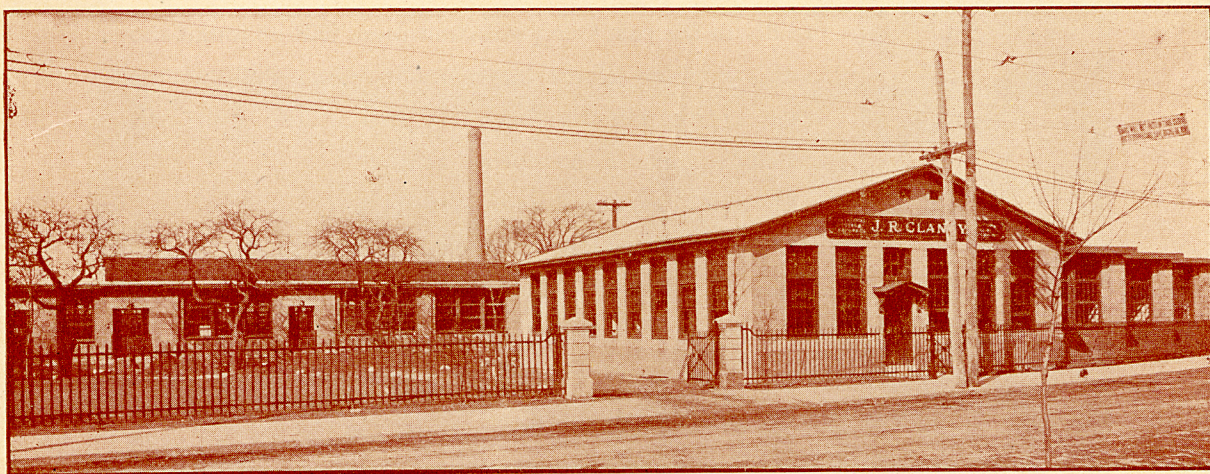
J. R. CLANCY
SYRACUSE, N.Y.
ESTABLISHED - 1885

CATALOGUE NUMBER TWENTY-FOUR

of
**THEATRICAL
STAGE FITTINGS**

MECHANICALLY RIGHT

Twenty-Seven Years of Successful, Practical Experience



J. R. CLANCY, Syracuse, N.Y., U. S. A.

COPYRIGHT, 1912, BY J. R. CLANCY

N. B. The entire contents (title, drawings, engravings, and text) are the property of John R. Clancy, and are intended to be protected by this copyright. Full Rights Reserved.

SPECIAL INDEX BY DIVISIONS

	Pages
Material for "Set" Scenery.....	7-19
Material for Curtains.....	20-32
Exit-Door Bolt.....	30-31
Material for "Hanging" Scenery.....	33-50
Staple Hardware.....	50
Footlight Posts and Carpet Pins.....	51
Profile	52
Carpets, Linen, Scrim, etc.....	53-56
Billposters' Supplies.....	57
Electric and Gas Department.....	58-62

See third cover-page For Cipher Telegraph Key, which you will find very economical when ordering by wire

Complete Itemized Index will be found on pages 63 and 64



J. R. CLANCY

SYRACUSE, N. Y.

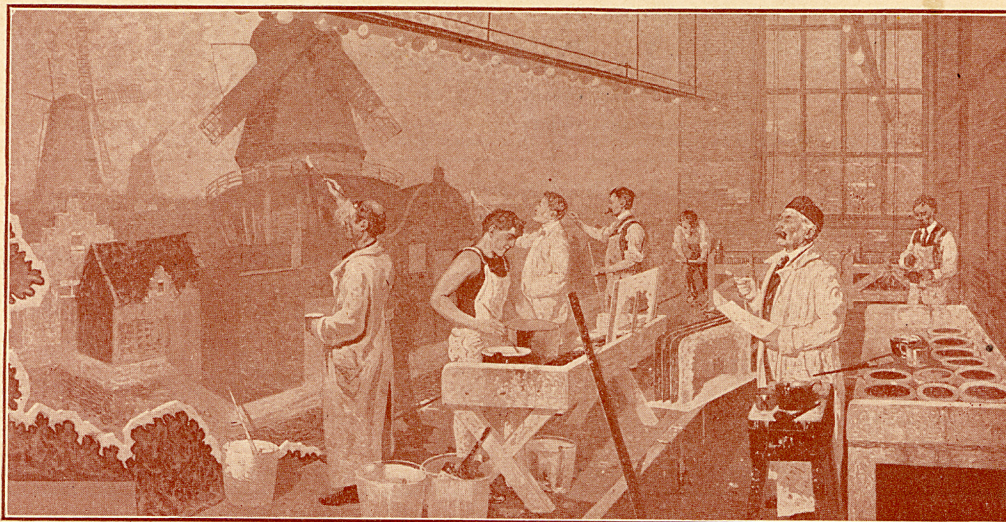
ESTABLISHED 1885
CATALOGUE
Nº 24



BLACKSMITH, BY
FRED K. MARSHALL

SINCE the issue of our last catalogue, we have been more busy than usual,—not only in erecting a new Plant, but in improving and perfecting our products—work that never stops with us and never will until the development in Theatrical Construction ceases to advance. It has advanced very rapidly in the past two years, and there will be found shown in this booklet all the latest and newest developments in stage rigging that have been designed to keep in the lead of the onward march in improvement.

Increased demand necessitated increased room and facilities,—to obtain which we have been forced to erect a factory especially suited to our special requirements. This is now completed and we are in happy occupancy of a model Plant, writing this greeting from our new office, actually the first work done within its walls.



SCENIC ARTISTS, BY FRED K. MARSHALL. ONE OF EIGHT MURAL DECORATIONS FROM THE OFFICE OF J. R. CLANCY.



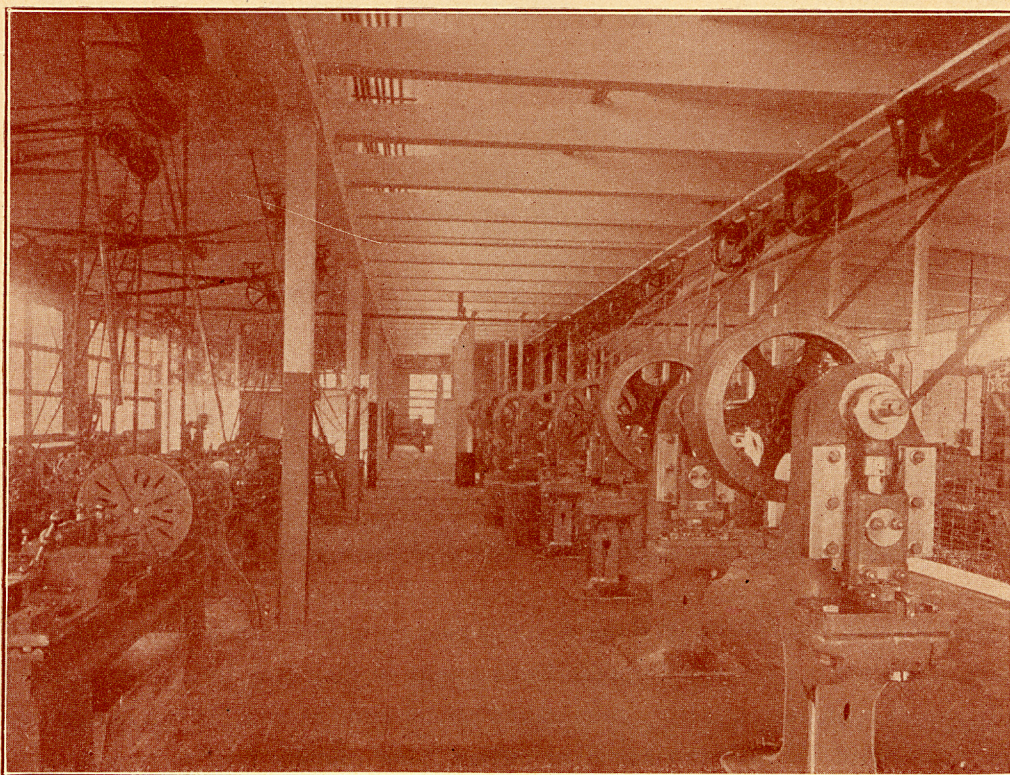
J. R. CLANCY

SYRACUSE, N. Y.

ESTABLISHED 1885
CATALOGUE
Nº 24

THE first requisites necessary for a model factory are Light, Air, Safety and Comfort of the occupants. Our buildings have proved successful in furnishing all of these. They are fireproof, concrete structures set in a frame of lawn, trees and flowers on an ample plot of ground.

Raw material is received in carloads at the rear. Passing through the Stock



Room, it then enters the Machine Shop, where it is inspected, and goes on through the various machines until every individual operation is completed, after which it passes to the inspectors, who check each particular piece.

Our Machine Shop contains a vast quantity of the most modern machine



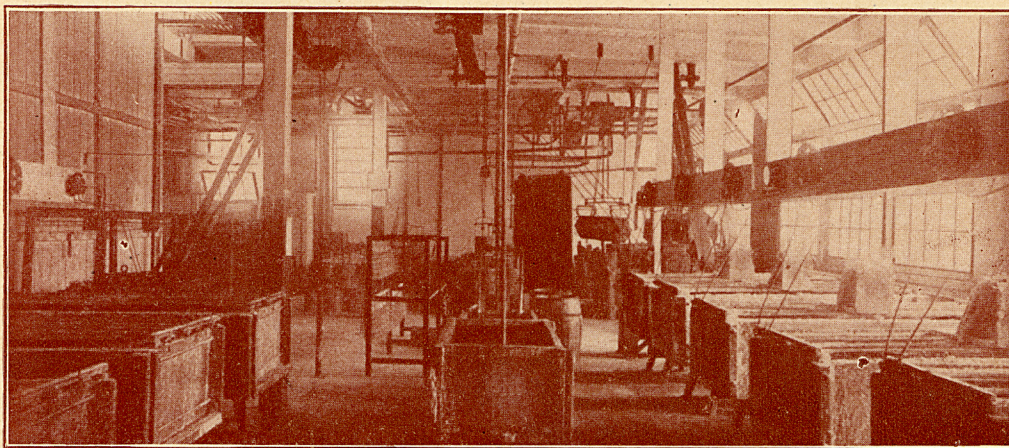
J. R. CLANCY

SYRACUSE, N. Y.

ESTABLISHED 1885
CATALOGUE
Nº 24

tools,—so far ahead of old-fashioned machinery that those familiar with the ordinary machine shop are sometimes at a loss to understand the uses of these wonderful tools. There are huge turret lathes costing five times as much as an ordinary lathe and doing ten times the work; drilling machines which do several operations at the same time; huge presses which force heavy sheet-metal into the form of parts that would ordinarily be made out of heavier but weaker castings.

From the Machine Shop, work is passed to the Finishing Rooms, where it is galvanized, plated or painted, as its use may require.



After leaving the Finishing Rooms, goods pass on to the Assembling and Stock Rooms, and from there to the Shipping Department on their way to you—who naturally expect from such a factory products to render good service. It is a matter of some pride with us that thousands of buyers have told us they were not disappointed.

In this establishment the comfort of those who work with us has been given full consideration. These betterment conditions occupy, according to a report of a Special State Factory Inspector, a larger proportion of the total floor space for Lunch, Recreation and Bath Rooms, than any other factory in the Empire State.



J. R. CLANCY

SYRACUSE, N. Y.

ESTABLISHED 1885
CATALOGUE
N° 24



CAFE TROIS FEUILLES—OUR LUNCH ROOM

THERE are various levels in the World of Manufacture,—just as there are in every other world. On the highest of these levels CLANCY STAGE RIGGING has held its position, undisputed for over twenty-seven years. One thing more than all others has made its ever increasing success—the keynote of our policy—"Be Honest", which means with us the best goods that can be made at the lowest possible price consistent with quality. This we do, not because we are philanthropists, but because we want to stay in business a long time, and think this is the best long-time policy.

We know something about Stage Designing. If you have problems that bother you, ask us; maybe we can help you, and if so we will be glad to.

Yours very respectfully,

J. R. CLANCY.

Syracuse, N. Y., February 1st, 1912.



J. R. CLANCY
SYRACUSE, N. Y.

ESTABLISHED 1885
CATALOGUE
Nº 24

GENERAL DIRECTIONS

C. O. D. BY EXPRESS, or if by freight, Sight Draft against bill of lading. It is impossible for us to fully inform ourselves as to the standing and credit of all who are inquiring of us day by day, and the only fair way is to treat all alike.

If you will anticipate your wants far enough ahead to allow sufficient time for freight delivery, you will secure a very considerable saving in the cost of your stage supplies. In the absence of specific directions for shipping, we will express all packages weighing twenty-five pounds or less and forward those in excess of that weight by fast freight. Special care will be taken to fill orders promptly, and no charge will be made for case or cartage.

After goods leave our depots in regular form they will be considered as in the possession of the parties ordering, and we will not guarantee any loss that may occur.

We NEVER DEVIATE FROM THESE CATALOGUE PRICES, WHICH ARE NET.

This list cancels all previous quotations. Owing to the advancing prices in all materials, we reserve the right to change prices in this catalogue, but in case of so doing we will not ship without informing you of any change.

ERRORS. In the press of business, errors may sometimes occur, of which we desire to be informed at once, that we may make proper amends, as it is our wish to render full satisfaction to all favoring us with their custom.

Yours very respectfully,

J. R. CLANCY.

See third cover-page for Cipher Telegraph Key, which you will find very economical when ordering by wire

Western Union Code also used; Cable Address "STAGESCREW".

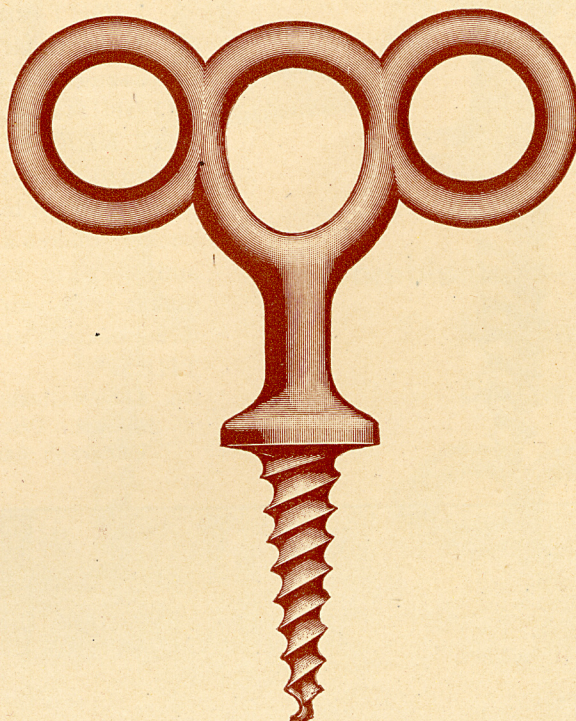


J. R. CLANCY
SYRACUSE, N. Y.

ESTABLISHED 1885
CATALOGUE
Nº 24

DROP-FORGED
STEEL STAGE SCREWS
DOUBLE-THREAD

ALL our Stage Screws, both Malleable Iron and Steel, are very carefully made and threaded by special tools of our own design. ¶ We especially recommend our No. 230, Light Steel Stage Screw;—its greatest diameter being but three-eighths of an inch—it is particularly economical in the saving of floors and carpets.



STEEL STAGE SCREWS

PACKED ONE DOZEN IN A BOX

No. 130—Heavy, Red Japan.	Price, per dozen	\$2.50
	Telegraph name, SEX		
No. 230—Light, Yellow Japan.	Price, per dozen	2.50
	Telegraph name, SEW		

MALLEABLE-IRON STAGE SCREWS

DOUBLE-THREAD

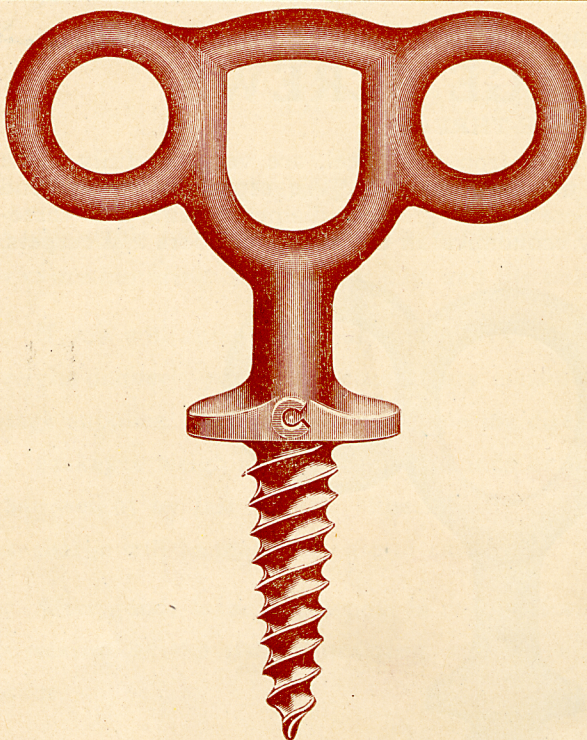
PACKED ONE DOZEN IN A BOX

No. 30—Black Japan.	Price, per dozen	\$1.25
	Telegraph name, SET		
No. 330—Extra Heavy, Green Japan.	Price, per dozen	1.25
	Telegraph name, HEARNE		



J. R. CLANCY
SYRACUSE, N. Y.

ESTABLISHED 1885
CATALOGUE
No 24



THE NEW YORK PEG

(Patent Pending)

A LIGHT, strong stage screw, $\frac{3}{8}$ in. thick; weight, 2.34 lbs. per dozen; NOTICE THERE IS NO HUMP ON THE SIDES; NOT NEEDED. The handle is designed to fit the nut of a $\frac{3}{8}$ in. bolt; does not lock together in the pocket; makes a good wedge, neat and easy to hang up or pack; makes your work easier; a useful wrench, costs nothing extra. TRY THEM.

No. 630—Malleable Iron, White Enamel. Price, per dozen..\$1.50
Telegraph name, PUTNAM

